

Set out:

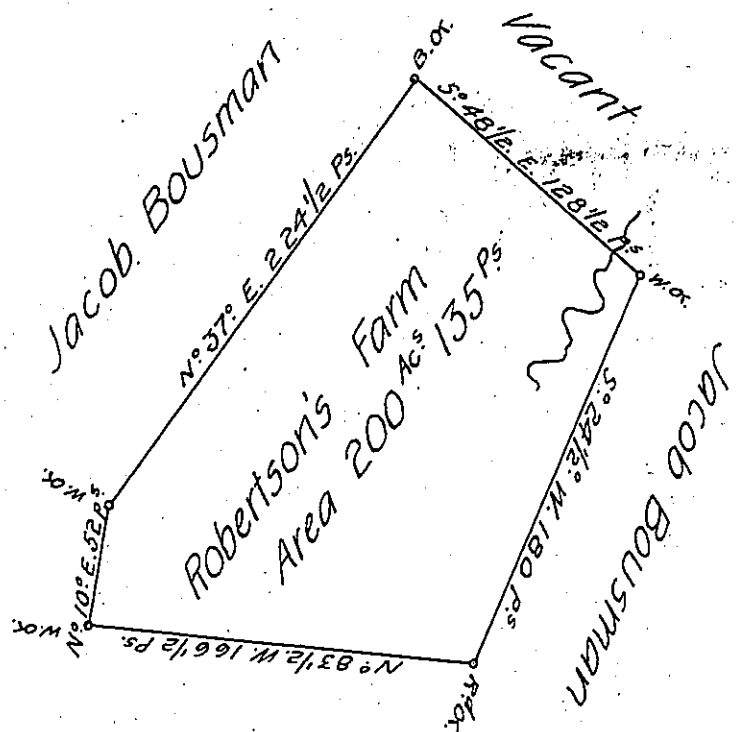
10

H4-452

Center

BEAV. Co.

1-14



A Draught of a Survey call'd "Robertson's Farm," situate on a Branch of Elk
 Horn Run in Washington County, cont^g 200 Ac^s 135 P^s with an Allow^{ce} of 6
 # Cent for Highways &c, executed June y^e 27th 1786, in Pursuance of a Warr^t
 for 300 Ac^s granted to Jn^o Robison dated Dec^r 20th 1786 *

Jn^o Lukens, Esq^r S. G!

Presley Nevill, } D. S^s
 Matt^w Ritchie, }

* Say dated 20th Dec^r 1785.

IN TESTIMONY that the above is a copy of the original remaining on file in
 the Department of Internal Affairs of Pennsylvania, made
 conformably to an Act of Assembly approved the 16th day of
 February, 1833, I have hereunto set my Hand and caused
 the Seal of said Department to be affixed at Harrisburg,
 this twenty-seventh day of August 1906.

Isaac R. Brown
 Secretary of Internal Affairs.